



SUNECHO

CRITICAL THINKING IN
ECHOCARDIOGRAPHY

Left atrial thrombus detection before mitral valvuloplasty

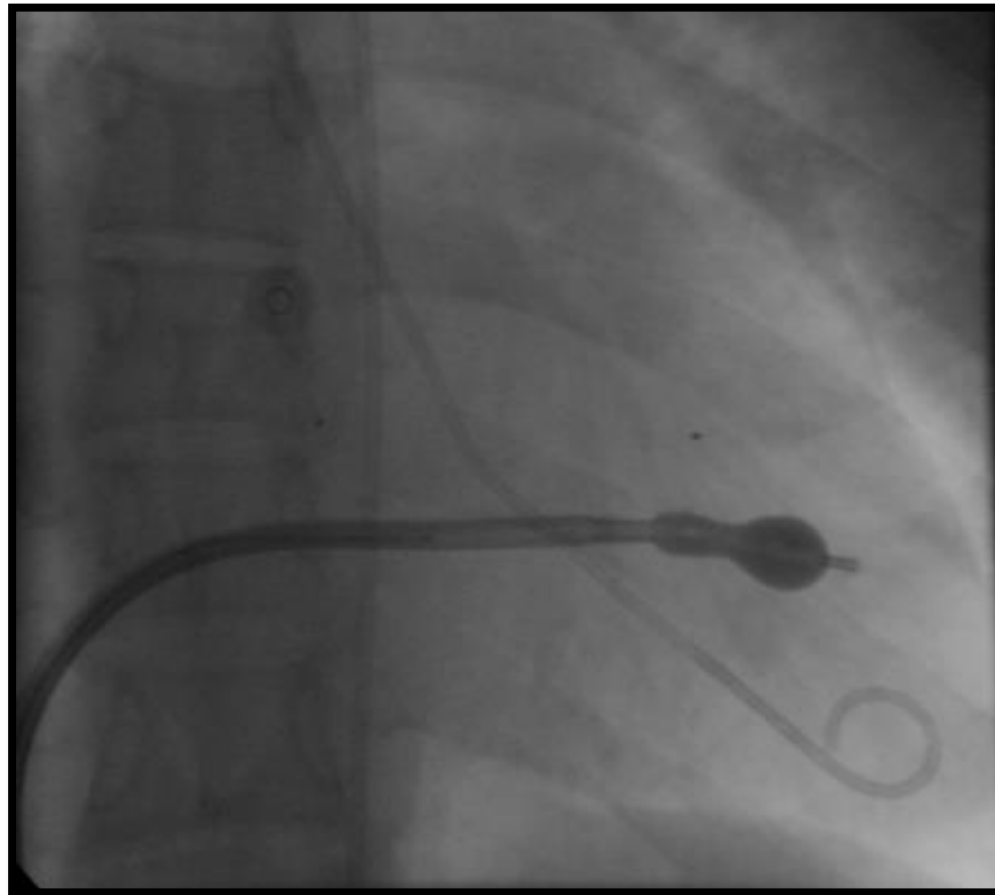
★ ★ ★ ★ 28 MAY 1983 ★ ★ ★ ★

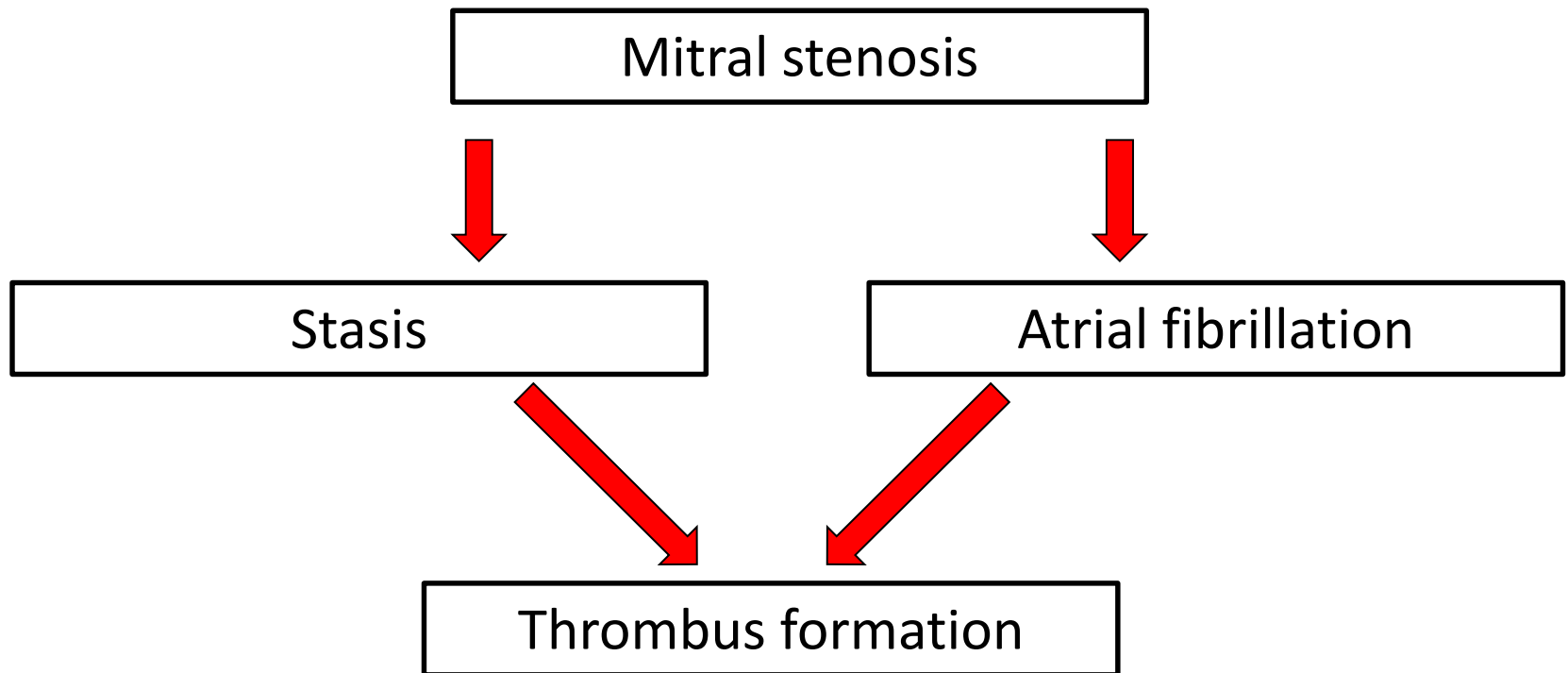
MRI vs TOE



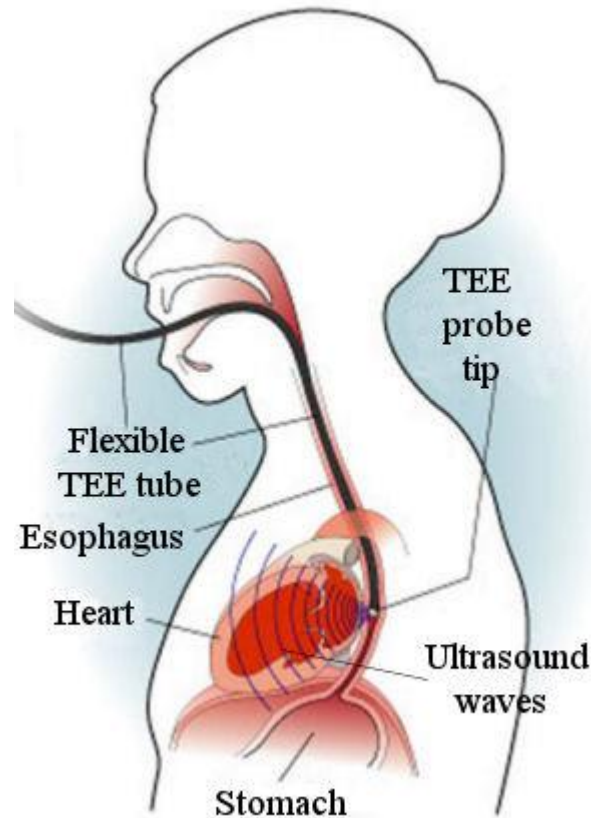
Christiaan Kotze
Final year medical student
Division of Cardiology
Stellenbosch University
And Tygerberg Hospital

Percutaneous Balloon Mitral Valvotomy (PBMV)

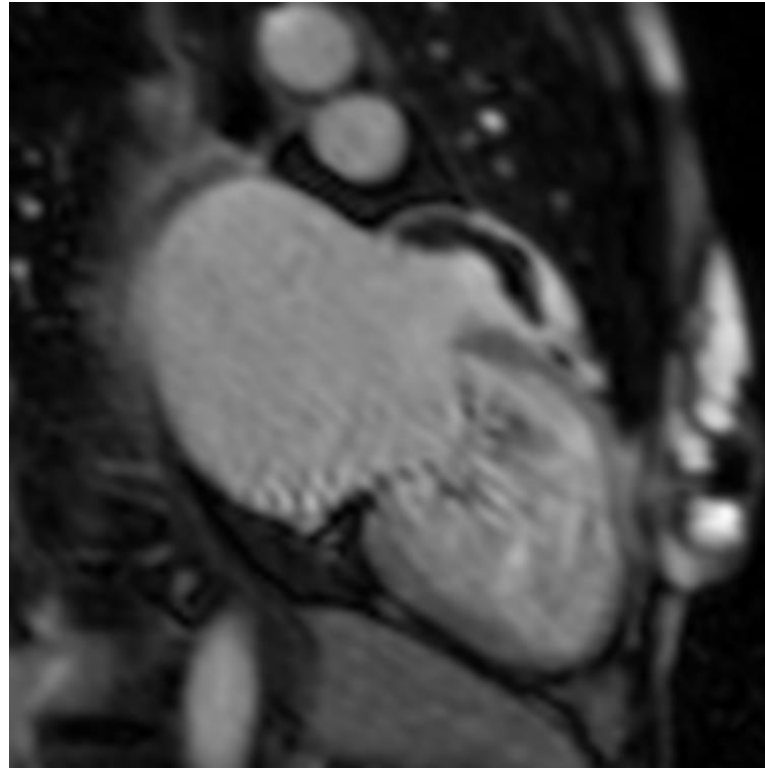




Trans-oesophageal echocardiography



Cardiac MRI

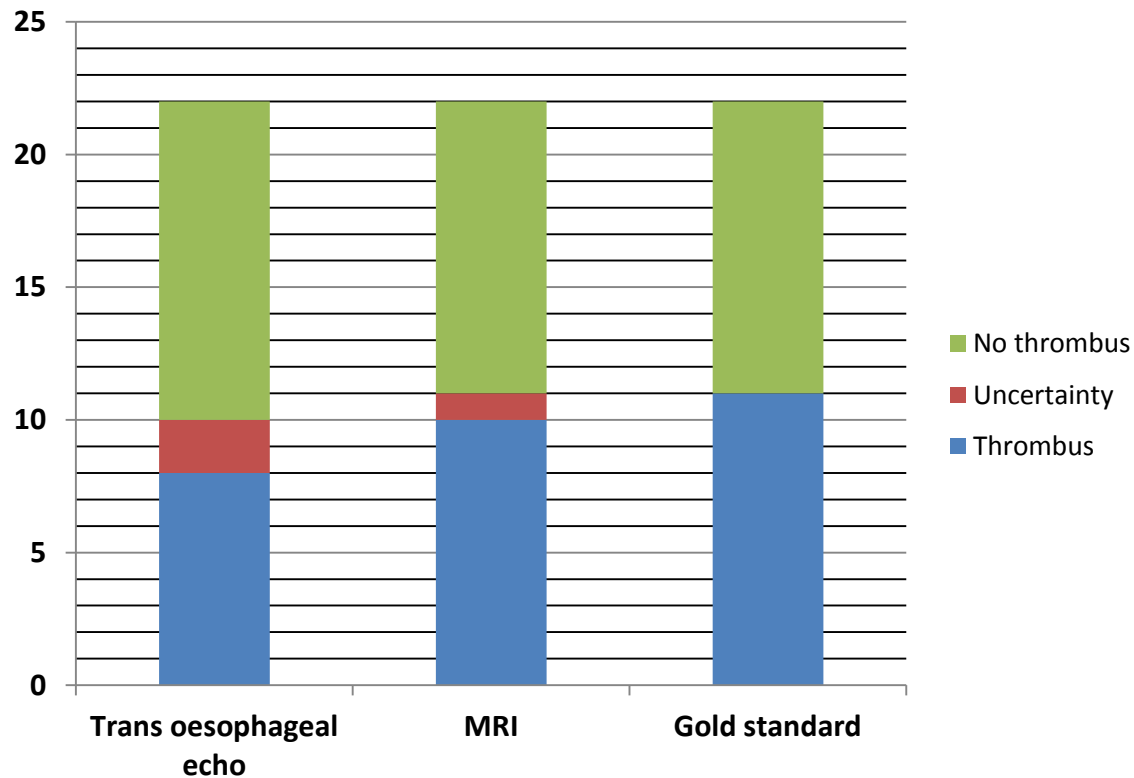


Study

- 22 patients
- TOE
- CMRI
- Gold standard



Comparing CMR/TOE to the gold standard consensus for the presence of LAA thrombus

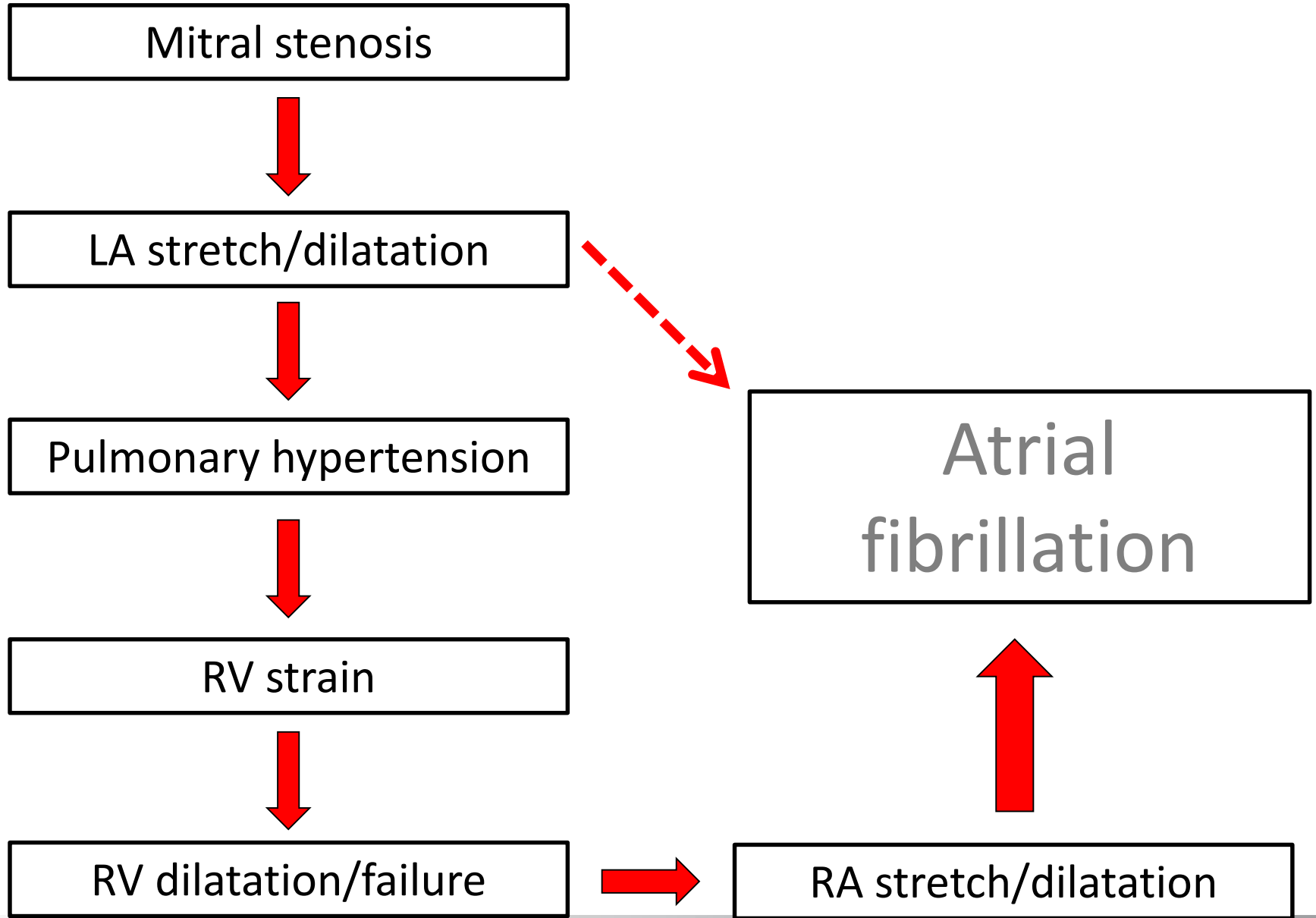


Predictors of LAA thrombus

1. Increases in right heart chamber sizes
2. Decrease in RV systolic function
3. Increased right heart diastolic pressures

PARAMETER	P VALUE
RV TAPSE	0,012
RA area	0,025
IVC diam	0,001
IVC collaps	0,022
RVEDV	0,009
RVESV	0,024





Conclusion/ Take home message



- TOE and CMRI are excellent at detecting LAA thrombus.
- CMRI good additional test
- Association between LA/LAA thrombus and right heart decompensation



