

Valvular replacement in a young patient with Rheumatic heart disease

Dr A Singh

Senior Fellow

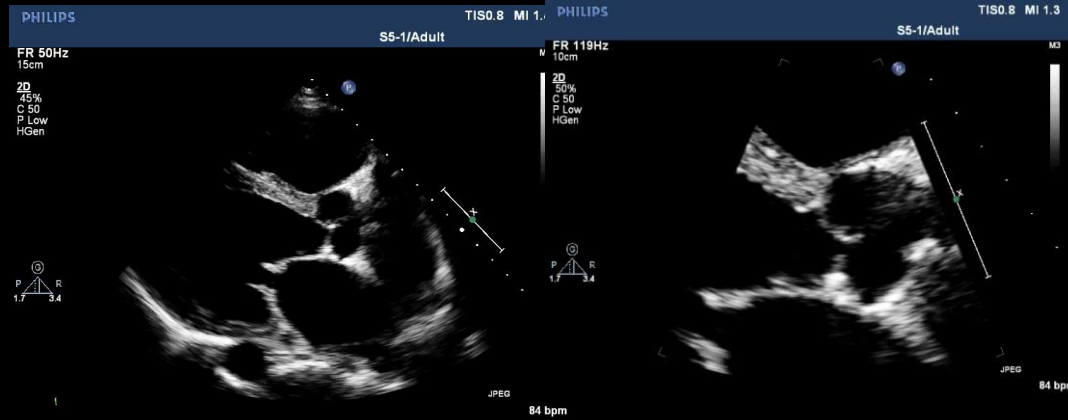
Chris Hani Baragwanath Academic Hospital

Age-29

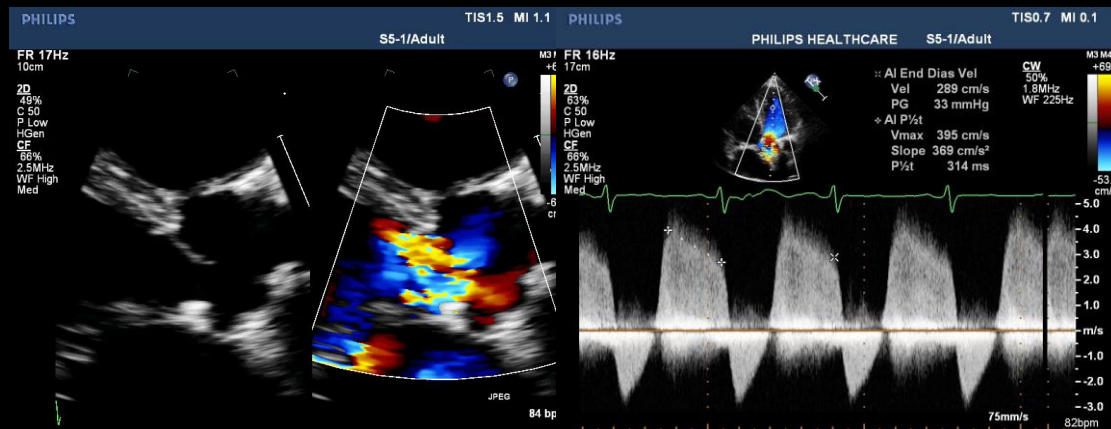
Gender –female

Presented with Nyha class 2 dyspnoea

Desires future pregnancy

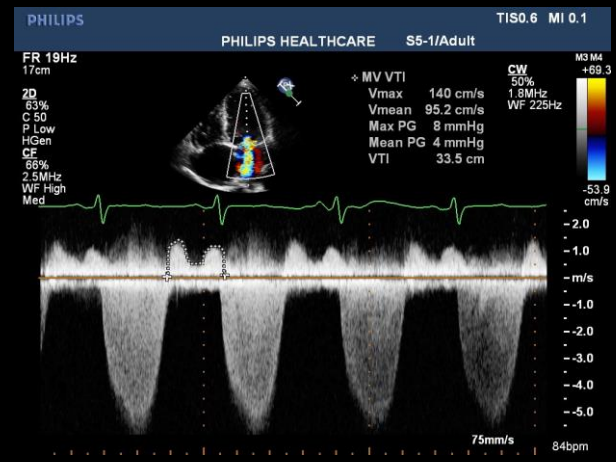
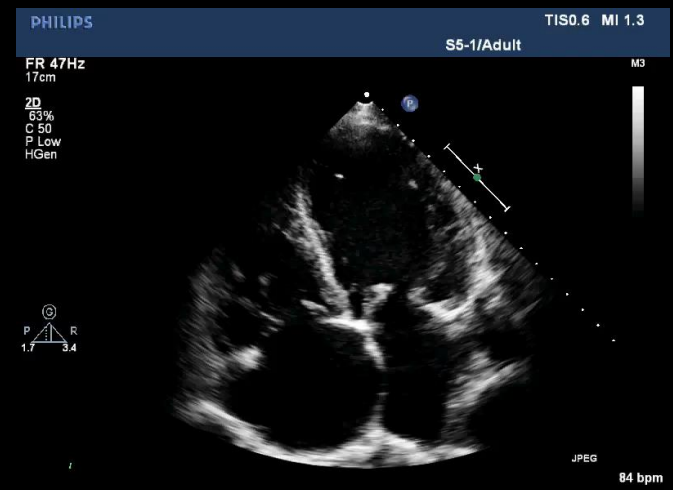
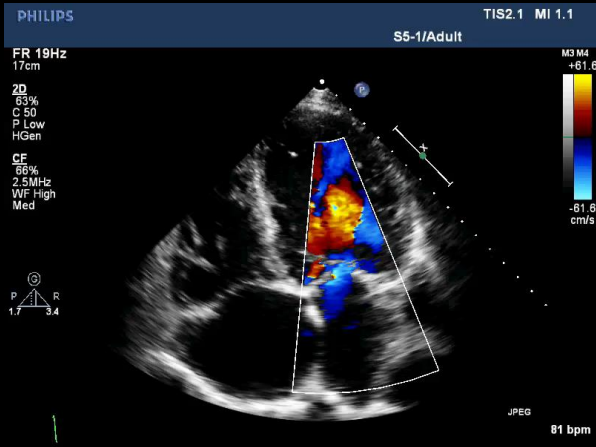


LVEDD=60 mm
LVESD =48 mm
LVEF= 55 %
Tricuspid aortic valve
Aortic annulus =20mm
Ascending aorta=30mm

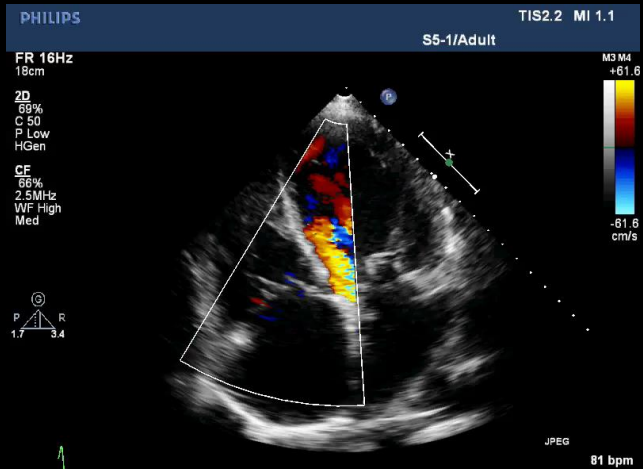


Severe Rheumatic AR

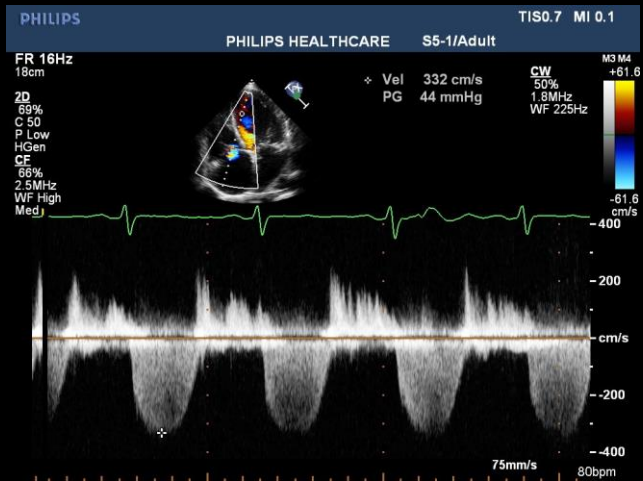
Jet width>65%
Vena contracta=9mm
Holodiastolic reversal
of flow in aorta



- Moderate Rheumatic MR
- MV Mean=4mmHg



- RV-dilated and dysfunctional
- TAPSE=8mm
- Moderate functional TR
- Tricuspid annulus =41mm
- Pulmonary artery pressure =59 mmHg



Summary

- 29 year old lady with severe symptomatic RHD - severe AR, moderate MR, moderate TR, complicated by pulmonary hypertension
- In Sinus Rhythm
- Desires Pregnancy